



Electronics



Mechanics



Software



Systems



Electronics



Mechanics



Software



Systems

FLATCom S20/S40

Basis machine for diverse applications

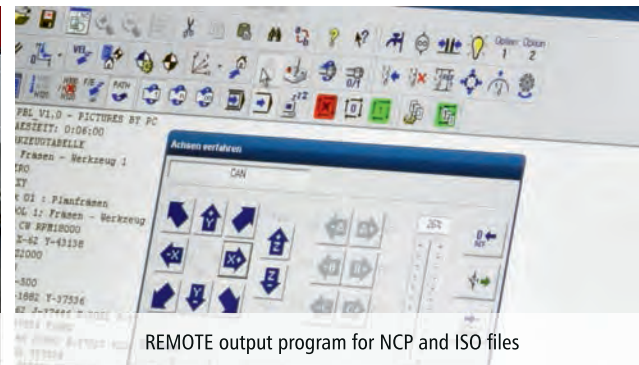
Further information
about the CNC machine program
of isel Germany AG is available on the internet at:
www.cnc-machines.isel.com



Universal milling spindles UFM 500/1050



stable frame made of high quality isel-aluminum profiles



REMOTE output program for NCP and ISO files



Control panel with function keys



Rotary unit ZD 30

isel Germany AG

Buergermeister-Ebert-Straße 40
D - 36124 Eichenzell

Phone: +49(0)6659/981-7 00
Fax: +49(0)6659/981-7 76
E-Mail: automation@isel.com

www.isel-germany.de

From Components to Systems

isel®

Basis machine for further applications

With the appropriate accessories the isel basis machine FlatCom S20 / S40 is also suitable for:

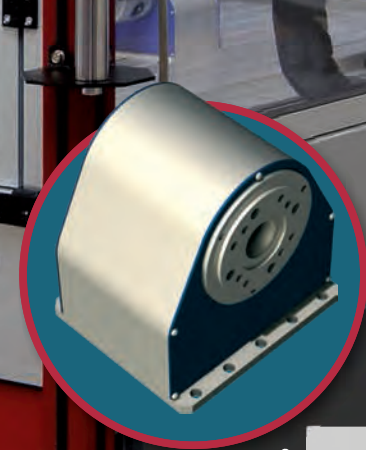
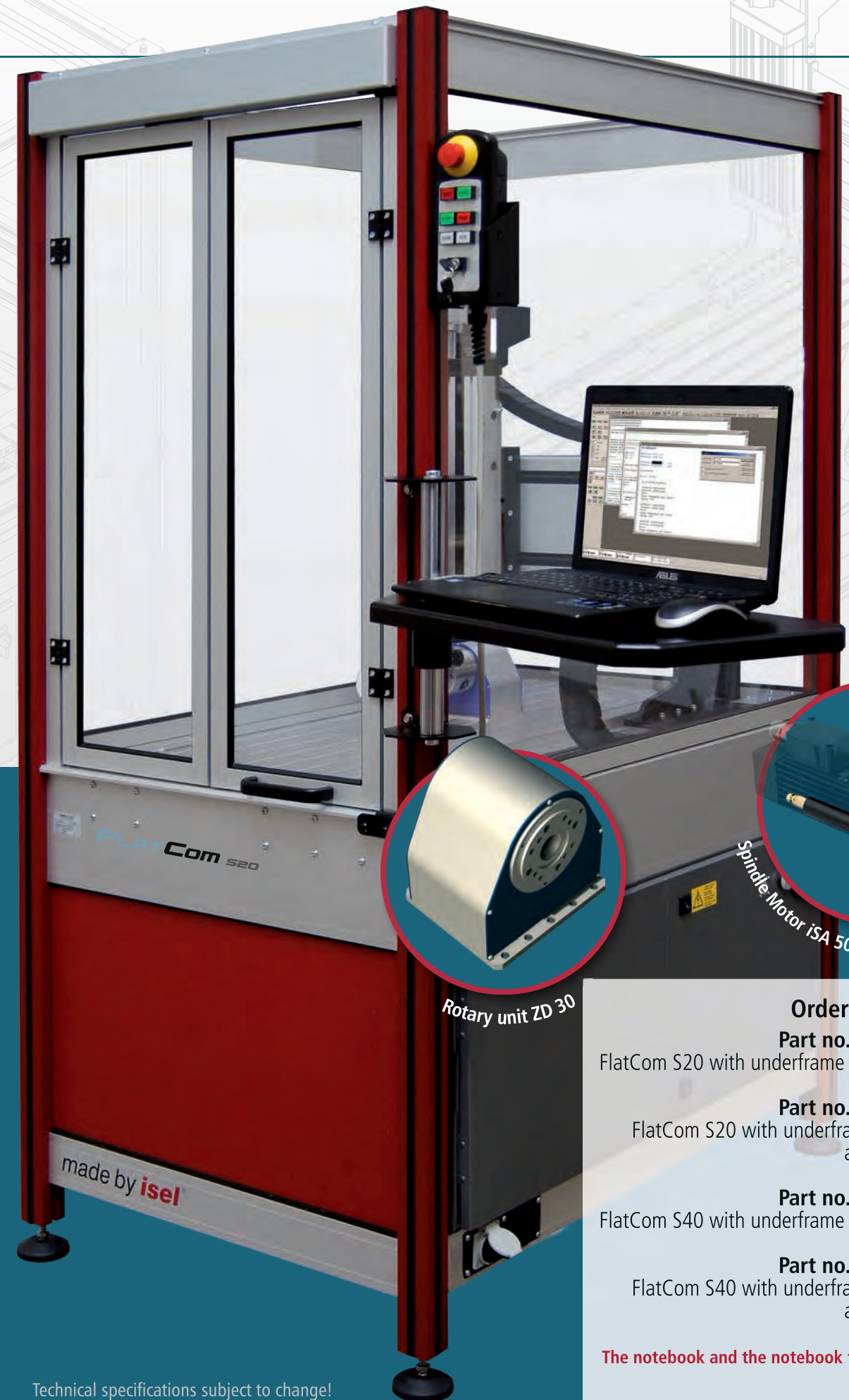
- Drilling
- Measuring
- Cutting
- Dispensing
- Glueing
- Casting
- Burring
- Polishing
- Testing
- Scanning
- Scaling
- Printing
- Placing
- Mounting
- Screwing
- etc...

Options

- Protective hood
- PC control panel
- Notebook and notebook tray
- Milling and engraving spindles
- Tool cooling system CoolMin®
- Minimum quantity lubrication
- 4th axis
- Suction device
- integrated PC controller iPC Series



	FLATCOM S20	FLATCOM S40
Processing areas X / Y / Z (mm)	350 / 600 / 150	1050 / 1520 / 250
Bench clamping area W x D (mm)	375 x 1000	1090 x 1840
Gap (mm)	200	300
Dimensions W / D / H (mm)	810 x 1190 x 1870	1590 x 2040 x 2000
Guides	Linear units with precision steel shafts and recirculating ball slots, adjustable for no play	
Processing speed (mm/s)	max. 100 mm/s	
Repeat accuracy (mm)	± 0.02	
Drive motors	Step motors	
Drive elements X / Y / Z	Ball screws 16x10 / 16x10 / 16x5 mm, adjustable for no play	Ball screws 16x10 / 25x10 / 16x5 mm, adjustable for no play
Controller	3-axis stepper motor controller, Microstepping, hood control, milling spindle control, digital inputs and outputs	
Operation	Function keys and emergency stop	
Software	Remote WIN (optionally: ProNC) for Windows 2000, XP, Vista, 7	
Weight (kg)	appr. 280	appr. 450
Connection values	230 VAC / 16A	



Ordering information
Part no.: 274412 12311
 FlatCom S20 with underframe and control cabinet
Part no.: 274413 12311
 FlatCom S20 with underframe, control cabinet and protective hood
Part no.: 274432 13531
 FlatCom S40 with underframe and control cabinet
Part no.: 274433 13531
 FlatCom S40 with underframe, control cabinet and protective hood

The notebook and the notebook tray are not included.

Technical specifications subject to change!