

Spindle Motor

iSA 900



iSA 900 with automatic tool change SK 11

Features

- Robust two-pole AC motor (asynchronous motor)
- Rectangular design, protection class IP55, isolation class F
- Cast bearing plate A- and B-side
- Special shaft for holding drills and milling tools
- Nominal output 0.9 kW (S6-40% mode)
- Speed range 5,000 - 24,000 rpm
- Automatic tool change
- Clamping range $\varnothing 3 - 6.35 \text{ mm} = 1/8''$
- External ventilation on B-side
- Speed control by frequency converter
- Double precision bearing, free from backlash
- Pneumatic tool change SK 11 (7.5 bar)

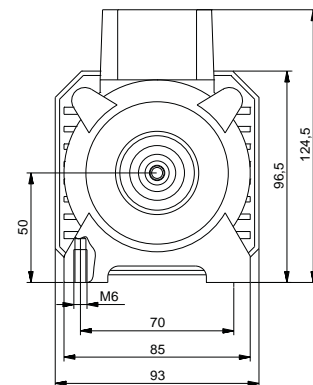
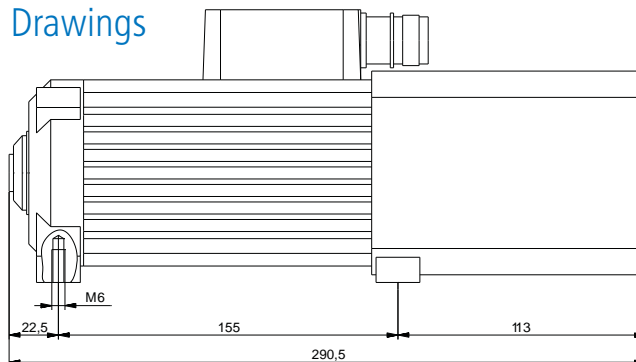
Options:

- CoolMin (external)
- Mounting plate
- Circular connectors
- Different collets

Technical Data

Description		iSA 900
Torque at nominal speed 24,000 rpm	[Nm]	0.37
Speed	[rpm]	5,000 to 24,000
Number of poles		2
Nominal voltage	[V]	3 x 220
S 6 = 40 % Nominal power	[kW]	0.9
Concentricity	[mm]	0.01
Weight	[kg]	5.5

Dimensioned Drawings



Order Data

Spindle motor iSA 900
Part no.: **477009 3324**

Spindle motor iSA 900
with frequency converter
Part no.: **310709 3612**

CoolMin with segmented hose
Part no.: **239011 0119**

Tool holder SK 11
Part no.: **239111 0000**

Collets

$\varnothing 3.0 \text{ mm}$ Part no.: **239110 3000**
 $\varnothing 3.175 \text{ mm}$ Part no.: **239110 3175**
 $\varnothing 6.0 \text{ mm}$ Part no.: **239110 6000**
 $\varnothing 6.350 \text{ mm}$ Part no.: **239110 6350**

Subject to technical modifications without prior notice.