

Laser Marker

J502-30



MAXIMIZE



JOT automation

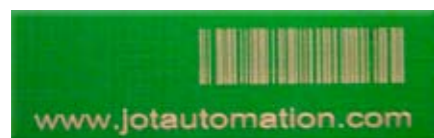
Laser marker J502-30

“EASY FAST EXACT”

JOT Automation in-line Laser Marker MAXIMIZES your production's traceability. FAST and RELIABLE with high resolution and permanent laser marking. J502-30 marks various materials including PWB materials, plastics, ceramics and metals. Code verification and fiducial recognition are carried out by means of machine vision system.

Key benefits

- Easy and fast new product teaching method
- Program library for fast changeover
- In-built code verification and fiducial recognition
- High marking quality
- Marks barcode, data matrix-code, graphics, text etc. on various materials
- User-friendly graphical user interface
- Various optimal laser models available



Laser marker J502-30

Standard Features

- PC control
- Graphical user interface
- XY servo axis
- Laser type:
 - 10 W CO₂
- Flat belt conveyor
 - Manual width adjustment
- PWB stopping and positioning system
- UPS
- ESD-safe design
- SMEMA electrical interface
- CE-safety compliant
- Class 1 laser product

Board Specifications

- Width: 50 - 500 mm (2" - 19.7")
- Length: 100- 500 mm (4" - 19.7")
- Thickness: min 1.0 mm (0.04")
- Board height (incl. components): -25 mm (1") +100 mm (4") from belt level
- Carrying edge width min. 3 mm (0.12")
- Twist: 1% of diagonal, max. 2 mm (0.08")
- Bending: 1% of width, max. 2 mm (0.08")

Technical Characteristics

- Line Length 1000 mm (39.4")
- Width 1900 mm (74.8")
- Weight ~500 kg (1102 lb)
- Conveyor track height 950 mm ±25 mm (37,4" ±1,0")
- Edge belt conveyor
 - Edge support 3 mm (0.12")
 - Speed 18 m/min (59 ft/min)
 - PWB transfer cycle time: less than 6 seconds
- Printing options:
 - Graphics
 - barcodes
 - 2D datamatrix
 - text

Installation Requirements

- Power supply 230 VAC / 50 Hz
- Compressed air connection 0.5-0.6 MPa (73-87 psi)

Options

- Connection to factory database
- Conveyor feeding direction right to left
- Conveyor width adjustment methods:
 - Motorized
 - Automatic (line width adjustment)
- Automatic Z-axis
- Machine vision system
 - Code reader
 - Code verification
 - Fiducial recognition
- Power supply: 115 V / 60 Hz
- Fume exhaust systems:
 - Internal
 - External (factory)
- Customized handshake protocol
- Laser types with various powers
 - CO₂
 - Fiber
- Different marking field



EUROPE

Finland

Hungary

Estonia

Italy

Germany

ASIA

China

South Korea

India

AMERICAS

USA

Canada

Please see www.jotautomation.com for country by country sales and service contact details or e-mail your contact request to info@jotautomation.com