

Wiha soft-face hammers.

Wiha makes it possible: Optimum power transmission even in confined spaces.



Soft-face hammers range



Wiha Safety soft-face hammer.

Perfect safety in every detail. 284 – 289



Wiha dead-blow hammer.

A star in the world of recoilless tools. 290 – 291



All Wiha soft-face hammers carry the GS Mark.

Wiha Info

Explanation of the colour-code system

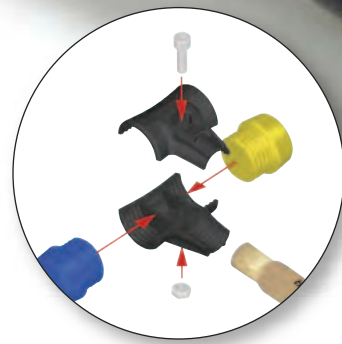
Wiha makes it easy to differentiate between different levels of hammer face hardness with its colour coding system.

Application	Material	Hammer face
For sensitive materials: Window construction, light metal construction, furniture and interior fittings industry, light assembly, tradeshow construction	Elastomer	soft
For sturdy applications: Tile laying, paving, curbstone setting, prefabricated house construction, light gardening and landscaping setting tasks	Rubber	medium-soft
For universal applications: Tool and machine construction, metal working, automobile repairs, panel beating, sheet metal and assembly work.	Polyurethane	medium-hard
For heavy-duty: Assembly and disassembly, sheet metal work, building and construction work, workshop tasks	Cellulose acetate	hard
For striking power: Building and construction industry, foundry, mould making, road work, forestry and agriculture, gardening and landscaping	Polyamide	very hard

○ = Round face
 □ = Square face

Wiha Safety soft-face hammer.

Perfect safety in every detail.



Safety Concept:
All parts are interlocked and clamped together by means of a nut and bolt assembly.

The specialty of the Safety Programme lies in the multitude of different colour coded hammer faces. These can, for different applications, be selected to suit your size and hardness requirements. This tool allows you to use single strikes on softer materials such as soft woods, plastics or aluminium as well as allowing for powerful repeated strikes required in foundries and tough industry applications.

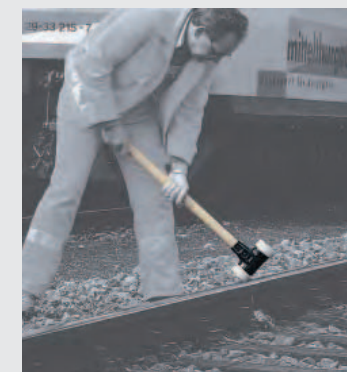
Depending on the size and weight of the tool there are different hammer face options available.

All Safety Tools are equipped with hardwood Hickory handles. Due to its high strength properties, Hickory has proven itself over the years as the ideal handle material.



The Wiha Safety soft-head hammer with black/white faces is the professional helper for garden and landscaping work.

The ergonomic outline of the handle in combination with the oval shape and special finish ensure that even with sweaty or slippery hands, the handle will not rotate or slip.



The powder-coated safety shells made from malleable cast iron clamp the head and handle securely together. The 840 mm long sledge hammer is the ideal length for special applications, e.g. for rail-track construction.



Wiha Safety soft-face hammer.

- Safety hammer with interchangeable faces of different hardnesses makes it the most suited hammer for all applications
- Nuts in the face and grooves in the shell provide a secure connection of the hammer housing
- High strength hickory handle guarantees longer tool life
- Each hammer piece is also available as a spare part

Wear safety glasses and protective gloves when working with soft head hammers.

In addition, observe the national standards and regulations.

Hammers with identical faces.



832-33 Safety soft-face hammer, black/ black.

Faces: Black: Medium soft, wear-resistant caoutchouc (rubber).
Housing: Powder coated safety shells made from malleable cast iron with grooves to clamp faces and handle in place.
Shaft: Hickory handle with ergonomic profile and non-slip surface.
Standards: GS-mark: Tested safety.
Application: Tile laying, paving, curbstone setting, dry wall construction, light gardening and landscaping setting tasks.

Order-No.	●!	↵	⊢	⊣	⊤
26509	30	300	87	290	5
26431	40	640	110	325	5
26432	50	1100	131	360	2
26433	60	1700	150	400	2
26439	80	3200	185	490	2

Hammers with identical faces.



832-99 Safety soft-face hammer, white/ white.

Faces: White: Very hard, colourfast and wear-resistant polyamide (nylon®).
Housing: Powder coated safety shells made from malleable cast iron with grooves to clamp faces and handle in place.
Shaft: Hickory handle with ergonomic profile and non-slip surface.
Standards: GS-mark: Tested safety.
Application: Building and construction industries, foundry, mould making, road work, forestry and agriculture, gardening and landscaping.

Order-No.	●!	↵	⊢	⊣	⊤
26644	30	300	87	290	5
26645	40	640	110	325	5
26646	50	1100	131	360	2
26647	60	1700	150	400	2
26648	80	3000	185	490	2



832-55 Safety soft-face hammer, yellow/ yellow.

Faces: Yellow: Medium hard, colourfast and wear-resistant polyurethane.
Housing: Powder coated safety shells made from malleable cast iron with grooves to clamp faces and handle in place.
Shaft: Hickory handle with ergonomic profile and non-slip surface.
Standards: GS-mark: Tested safety.
Application: Tool and machine construction, metal working, automobile repairs, panel beating, sheet metal and assembly work.

Order-No.	●!	↵	⊢	⊣	⊤
26640	30	300	87	290	5
26641	40	640	110	325	5
26642	50	1100	131	360	2
26643	60	1700	150	400	2

Wiha Info

Explanation of the colour-code system

Material		Hammer face	
		Rundkopf	Vierkantkopf
Elastomer	soft		
Rubber	medium-soft		
Polyurethane	medium-hard		
Cellulose acetate	hard		
Polyamide	very hard		

Wiha Safety soft-face hammer.

Perfect safety in every detail.

Hammers with combined faces.



832-15 Safety soft-face hammer, blue/ yellow.
 Faces: Blue: Soft, colourfast and wear-resistant elastomer.
 Yellow: Medium hard, colourfast and wear-resistant polyurethane.
 Housing: Powder coated safety shells made from malleable cast iron with grooves to clamp faces and handle in place.
 Shaft: Hickory handle with ergonomic profile and non-slip surface.
 Standards: GS-mark: Tested safety.
 Application: Window construction, light metal construction, furniture and interior fittings industries, light assembly, tradeshow construction. Tool and machine construction, metal working, automobile repairs, panel beating, sheet metal and assembly work.

Order-No.	●	!	↙	↘	⊥	⊥
26653	30	300	87	290		5
26654	40	640	110	325		5
26655	50	1100	131	360		2
26656	60	1700	150	400		2

Hammers with combined faces.



832-13 Safety soft-face hammer, blue/ black.
 Faces: Blue: Soft, colourfast and wear-resistant elastomer.
 Black: Medium soft, wear-resistant caoutchouc (rubber).
 Housing: Powder coated safety shells made from malleable cast iron with grooves to clamp faces and handle in place.
 Shaft: Hickory handle with ergonomic profile and non-slip surface.
 Standards: GS-mark: Tested safety.
 Application: Window construction, light metal construction, furniture and interior fittings industries, light assembly, tradeshow construction. Tile laying, paving, curbstone setting, dry wall construction, light gardening and landscaping setting tasks.

Order-No.	●	!	↙	↘	⊥	⊥
26649	30	300	87	290		5
26650	40	640	110	325		5
26651	50	1100	131	360		2
26652	60	1700	150	400		2

Hammers with combined faces.



832-38 Safety soft-face hammer, black/ transparent orange.
 Faces: Black: Medium soft, wear-resistant caoutchouc (rubber).
 Transparent orange: Hard, colourfast and wear-resistant cellulose acetate.
 Housing: Powder coated safety shells made from malleable cast iron with grooves to clamp faces and handle in place.
 Shaft: Hickory handle with ergonomic profile and non-slip surface.
 Standards: GS-mark: Tested safety.
 Application: Tile laying, paving, curbstone setting, dry wall construction, light gardening and landscaping setting tasks. Assembly and disassembly, sheet metal work, building and construction work, workshop tasks.

Order-No.	●	!	↙	↘	⊥	⊥
26611	30	300	87	290		5
26612	40	640	110	325		5
26613	50	1100	131	360		2
26614	60	1700	150	400		2

Sledge hammers.



832-99 Safety sledge hammer, white/ white.
 Faces: White: Very hard, colourfast and wear-resistant polyamide (nylon®).
 Housing: Powder coated safety shells made from malleable cast iron with grooves to clamp faces and handle in place.
 Shaft: Hickory handle with ergonomic profile and non-slip surface.
 Standards: GS-mark: Tested safety.
 Application: Building and construction industries, foundry, mould making, road work, forestry and agriculture, gardening and landscaping.

Order-No.	●	!	↙	↘	⊥	⊥
26674	80L	3450	185	840		2



834-15 Safety soft-face hammer, blue/ yellow, square face.
 Faces: Blue: Soft, colourfast and wear-resistant elastomer.
 Yellow: Medium hard, colourfast and wear-resistant polyurethane.
 Housing: Powder coated safety shells made from malleable cast iron with grooves to clamp faces and handle in place.
 Shaft: Hickory handle with ergonomic profile and non-slip surface.
 Standards: GS-mark: Tested safety.
 Application: Window construction, light metal construction, furniture and interior fittings industries, light assembly, tradeshow construction. Tool and machine construction, metal working, automobile repairs, panel beating, sheet metal and assembly work.
 Extra: Square face can be turned by 90° for optimum working on edges and borders.

Order-No.	●	!	↙	↘	⊥	⊥
26662	40	650	110	325		5



832-35 Safety soft-face hammer, black/ yellow.
 Faces: Black: Medium soft, wear-resistant caoutchouc (rubber).
 Yellow: Medium hard, colourfast and wear-resistant polyurethane.
 Housing: Powder coated safety shells made from malleable cast iron with grooves to clamp faces and handle in place.
 Shaft: Hickory handle with ergonomic profile and non-slip surface.
 Standards: GS-mark: Tested safety.
 Application: Tile laying, paving, curbstone setting, dry wall construction, light gardening and landscaping setting tasks. Tool and machine construction, metal working, automobile repairs, panel beating, sheet metal and assembly work.

Order-No.	●	!	↙	↘	⊥	⊥
26434	30	300	87	290		5
26435	40	640	110	325		5
26436	50	1100	131	360		2
26437	60	1700	150	400		2



832-39 Safety soft-face hammer, black/ white.
 Faces: Black: Medium soft, wear-resistant caoutchouc (rubber).
 White: Very hard, colourfast and wear-resistant polyamide (nylon®).
 Housing: Powder coated safety shells made from malleable cast iron with grooves to clamp faces and handle in place.
 Shaft: Hickory handle with ergonomic profile and non-slip surface.
 Standards: GS-mark: Tested safety.
 Application: Tile laying, paving, curbstone setting, dry wall construction, light gardening and landscaping setting tasks. Building and construction industries, foundry, mould making, road work, forestry and agriculture, gardening and landscaping.

Order-No.	●	!	↙	↘	⊥	⊥
26657	30	300	87	290		5
26658	40	640	110	325		5
26659	50	1100	131	360		2
26660	60	1700	150	400		2
26582	80	3000	185	490		2



832-39 Safety sledge hammer, black/ white.
 Faces: Black: Medium soft, wear-resistant caoutchouc (rubber).
 White: Very hard, colourfast and wear-resistant polyamide (nylon®).
 Housing: Powder coated safety shells made from malleable cast iron with grooves to clamp faces and handle in place.
 Shaft: Hickory handle with ergonomic profile and non-slip surface.
 Standards: GS-mark: Tested safety.
 Application: Stone laying, paving, curbstone setting, gardening and landscape setting tasks. Building and construction industries, foundry, mould making, road work, forestry and agriculture, gardening and landscaping.

Order-No.	●	!	↙	↘	⊥	⊥
26661	80L	3450	185	840		2

Wiha Safety soft-face hammer.

Perfect safety in every detail.

Substitute faces.



831-1 Hammer face, blue, for Safety soft-face hammer.
Material: Soft elastomer, colourfast and wear-resistant.
Application: Window construction, light metal construction, furniture and interior fittings industries, light assembly, tradeshow construction.

Order-No.	●	!	↔	↕
26663	30	17		5
26664	40	39		5
26665	50	85		2
26666	60	135		2



833-1 Square hammer face, blue, for Safety soft-face hammer.
Material: Soft elastomer, colourfast and wear-resistant.
Application: Window construction, light metal construction, furniture and interior fittings industries, light assembly, tradeshow construction.
Extra: Square face can be turned by 90° for optimum working on edges and borders.

Order-No.	■	!	↔	↕
26673	40	47		5



831-3 Hammer face, black for Safety soft-face hammer.
Material: Medium soft caoutchouc (rubber), wear-resistant.
Application: Tile laying, paving, curbstone setting, dry wall construction, light gardening and landscaping setting tasks.

Order-No.	●	!	↔	↕
26422	30	27		5
26423	40	62		5
26424	50	111		2
26425	60	192		2
26426	80	410	also for sledge hammers	2

Substitute faces.



831-5 Hammer face, yellow, for Safety soft-face hammer.
Material: Medium hard polyurethane, colourfast and wear-resistant.
Application: Tool and machine construction, metal working, automobile repairs, panel beating, sheet metal and assembly work.

Order-No.	●	!	↔	↕
26427	30	27		5
26428	40	57		5
26429	50	116		2
26430	60	190		2



833-5 Square hammer face, yellow for Safety soft-face hammer.
Material: Medium hard polyurethane, colourfast and wear-resistant.
Application: Tool and machine construction, metal working, automobile repairs, panel beating, sheet metal and assembly work.
Extra: Square face can be turned by 90° for optimum working on edges and borders.

Order-No.	■	!	↔	↕
26438	40	65		5



831-8 Hammer face, transparent orange, for Safety soft-face hammer.
Material: Hard cellulose acetate, colourfast and wear-resistant.
Application: Assembly and disassembly, sheet metal work, building and construction work, workshop tasks.

Order-No.	●	!	↔	↕
26615	30	27		5
26616	40	57		5
26618	50	118		2
26620	60	195		2



831-9 Hammer face, white, for Safety soft-face hammer.
Material: Very hard polyamide (Nylon®), colourfast and wear-resistant.
Application: Building and construction industries, foundry, mould making, road work, forestry and agriculture, gardening and landscaping.

Order-No.	●	!	↔	↕
26510	30	24		5
26511	40	56		5
26512	50	110		2
26513	60	187		2
26514	80	400	also for sledge hammers	2

Substitute housing and substitute handles.



829-0 Housing set for Safety soft-face hammer.
Material: Powder-coated malleable cast-iron shells, 2 pieces, with screw and counternut.
Properties: Elastic malleable cast iron, crack resistant.

Order-No.	●	!	↔	↕
26668	30	170		1
26669	40	390		1
26670	50	670		1
26671	60	1040		1
26672	80	1900	also for sledge hammers	1



830-0 Hickory handle for Safety soft-face hammer.
Material: Carefully selected hickory with non-slip surface.
Properties: Over the years, hickory, an extremely hard wood, has proven to be the best material for hammer handles.

Order-No.	●	!	↔	↕
26417	30	260	90	5
26418	40	280	130	5
26419	50	310	190	2
26420	60	340	250	2
26421	80	400	310	2
26667	80L	800	650	for sledgehammer

Hammer set.



832 B8 Safety hammer set, 8 pcs.
Shaft: Hickory handle with ergonomic profile and non-slip surface.
Standards: GS-mark: Tested safety.
Design: Hammer size 40 with 6 exchangeable hammer heads in metal case, incl. hex keys for simple exchange.
Content: 832-38 Safety soft-face hammer orange/black
831-1 soft hammer face, blue
831-3 medium soft hammer face, black
831-5 medium hard hammer face, yellow
831-9 very hard hammer face, white
833-1 soft square hammer face, blue
833-5 medium hard square hammer face, yellow
352 size 6 hex L-key, long made of chrome-vanadium steel, through hardened, nickel-plated.
Application: Practical set with different faces for every application.

Order-No.	Series	↔	↕
28050	832 B8	640	1

Wiha Info



Wiha square hammer heads offer a **27% greater striking surface** than round hammer heads with the same diameter.

They are thus particularly suitable for working on corners and edges.

Wiha Info

Explanation of the colour-code system

Material		Hammer face	
		Round face	Square face
Elastomer	soft		
Rubber	medium-soft		
Polyurethane	medium-hard		
Cellulose acetate	hard		
Polyamide	very hard		

Wiha Info

When replacing heads or handles, please note the following torques:

size 30 = 20 Nm
size 40 = 40 Nm
size 50 = 70 Nm
size 60 = 70 Nm
size 80 = 80 Nm

Wiha dead-blow hammer.

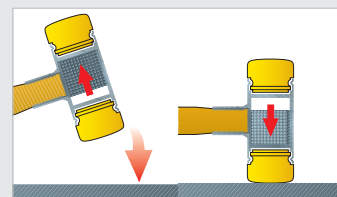
A star in the world of recoilless tools.



Wiha has now put an end to the familiar problems associated with the stress on joints and muscles when working with recoiling hammers. The Wiha dead-blow hammer has a special filling in the hammer casing to prevent recoil. Professionals who use these hammers on a continuous basis, for example, in tool and die shops or in body maintenance and sheet-metal work, appreciate the benefits of this recoilless hammer from Wiha.



The face is made of medium-hard polyurethane for full blows and protects delicate surfaces and edges.



The special metal filling in the hammer casing enables recoilless working.



Simple exchange of worn hammer faces:
1. Grip the hammer in the vice, lift to remove old hammer face.
2. Press the new hammer face into the handle until it locks into position.



Wiha dead-blow hammer.

- Recoilless working due to special metal filling in the hammer casing
- The hammer weight is increased by about 25% for additional power
- Easy on delicate surfaces and edges as a result of its comfort cushioning surface
- Available with hickory wood handle or steel tube shaft
- Faces and wooden handles available as spare parts

Wear safety glasses and protective gloves when working with soft head hammers.

In addition, observe the national standards and regulations.

Hammers.



800 Dead-blow hammer with hickory handle.

Faces: Both yellow: Medium hard, colourfast and wear-resistant polyurethane.
Housing: Manufactured from precision steel tubing with welded on shaft, powder coated.
Shaft: Hickory handle coated with ergonomic profile and high quality surface.
Standards: GS-mark: Tested safety.
Application: Controlled strikes e.g. on workpieces being held by vices or assembly work.
Extra: With cast iron balls inside the hammer head for recoilless work.

Order-No.	●:	↺	↻	↻	↻
02092	25	320	108	320	5
02093	30	460	115	350	5
02094	35	580	118	355	5
02095	40	760	125	375	5
02096	45	1000	130	380	2
02097	50	1250	135	385	2
02098	60	2000	165	420	2
02099	70	2600	165	430	2

Sledgehammers. Spare parts.



800 Dead-blow sledge hammer with hickory handle.

Faces: Both yellow: Medium hard, colourfast and wear-resistant polyurethane.
Housing: Manufactured from precision steel tubing with welded on shaft, powder coated.
Shaft: Hickory handle coated with ergonomic profile and high quality surface.
Standards: GS-mark: Tested safety.
Application: Controlled positioning strikes in assembly and disassembly, straightening.
Extra: With cast iron balls inside the hammer head for recoilless work.

Order-No.	●:	↺	↻	↻	↻
02101	80	4550	205	880	1
02091	100	6860	210	1000	1



800S Hickory handle for dead-blow hammer.

Material: Carefully selected hickory with high quality surface.
Properties: Over the years, hickory, an extremely hard wood, has proven to be the best material for hammer handles.

Order-No.	●:	↺	↻	↻	↻
02113	25	295	69		10
02114	30/35	320	113		10
02115	40/45	335	123		10
02116	50	335	133		10
02117	60/70	360	165		5
28051	80	800	550	VPA GS-mark	1
28052	100	900	860	VPA GS-mark	1



800K Hammer face, yellow for dead-blow hammer.

Material: Medium hard polyurethane, colourfast and wear-resistant.

Order-No.	●:	↺	↻	↻
02103	25	16		10
02104	30	22		10
02105	35	30		10
02106	40	45		10
02107	45	63		5
02108	50	86		5
02109	60	130		5
02110	70	178		5
02111	80	250		2
02102	100	449		2