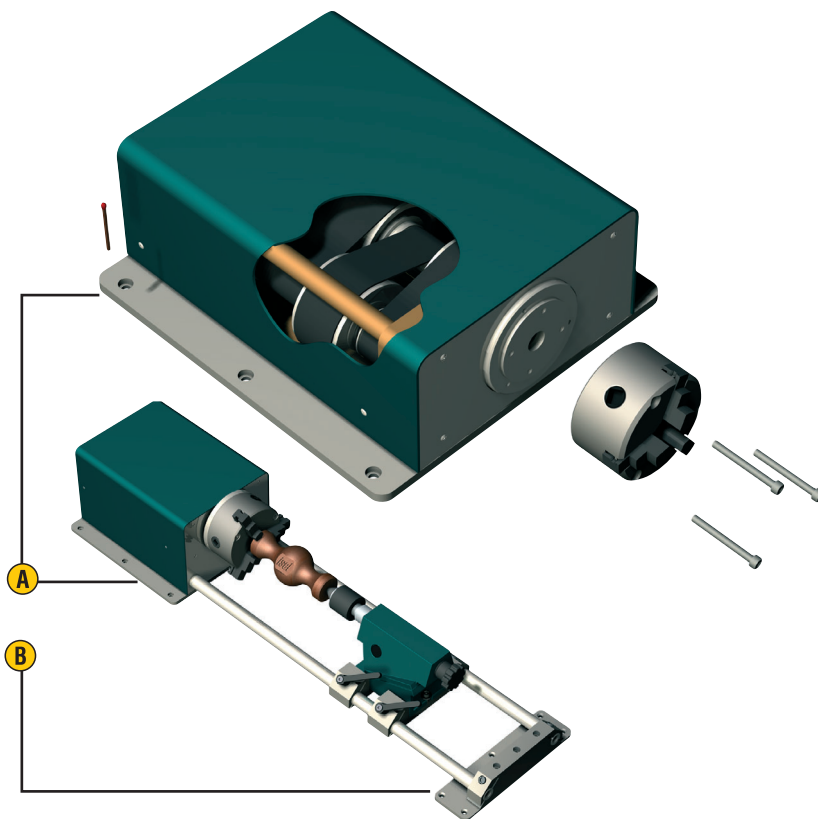


Rotary Axis

D 2



Features

- play-less timing belt drive with stepping, DC or AC servo motor
- reduction 1:40
- steel flange \varnothing 86 mm, 56 ± 3 HRC
- weight: 10.6 kg

Options:

- mounting plate, set 1 or set 2
- tailstock unit
- permanent magnetic brake 24 V [10 Nm] (locked in zero-current state)
- electromagnetic brake 24 V [15 Nm] (locked at impressed voltage)
- stepping motor drive with encoder
- CNC control via amphenol

- A** Mounting plate, set 1
(including fastening)
Item no.: 277024
- B** Mounting plate, set 2
(including fastening)
Item no.: 277024 1000

Order key

2640X0 X0X1

Motors

- 0 = stepping motor
- 1 = DC servo motor
- 2 = AC servo motor

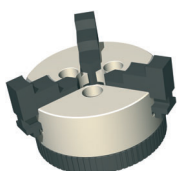
Brake

- 0 = without brake
- 1 = permanent magnet
- 2 = electromagnet

Tailstock

- 0 = without tailstock
- 1 = RE 2, L=1000 mm
- 2 = RE 2, L=1500 mm
- 3 = RE 2, L=2000 mm

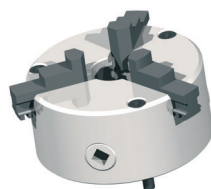
Accessory



Chuck

3-jaw chuck \varnothing 80

Item no.: 269060 0080



Chuck

3-jaw chuck \varnothing 125

(only for D 2 + tailstock RE 2)

Item no.: 269060 1125

no image

Adjusting aid D 2

to exactly bring the rotary axis D 2 into line with machines
- setting of parallelism/workpiece zero points (reproducible alignment by demountable fittings)

Item no.: 269076 0002

Rotary Axis

D 2

Technical data

	Stepping motor MS 200 HT *	DC servo motor MV 120	AC servo motor MY 054
Reduction ratio	1:40	1:40	1:40
Drive revolution [1/min] [1/min]	0 - 30	0 - 60	0 - 150
Operating moment (0 to 500/500 to 1,000 Hz) [Nm]	35 / 30	--	--
Nominal torque [Nm]	--	12	25
Nominal holding torque (static load) [Nm]	55	18	40
Min. increment (positioning accuracy) [arcmin]	2	2	2

* Values at half-step operation

Scale Drawings

