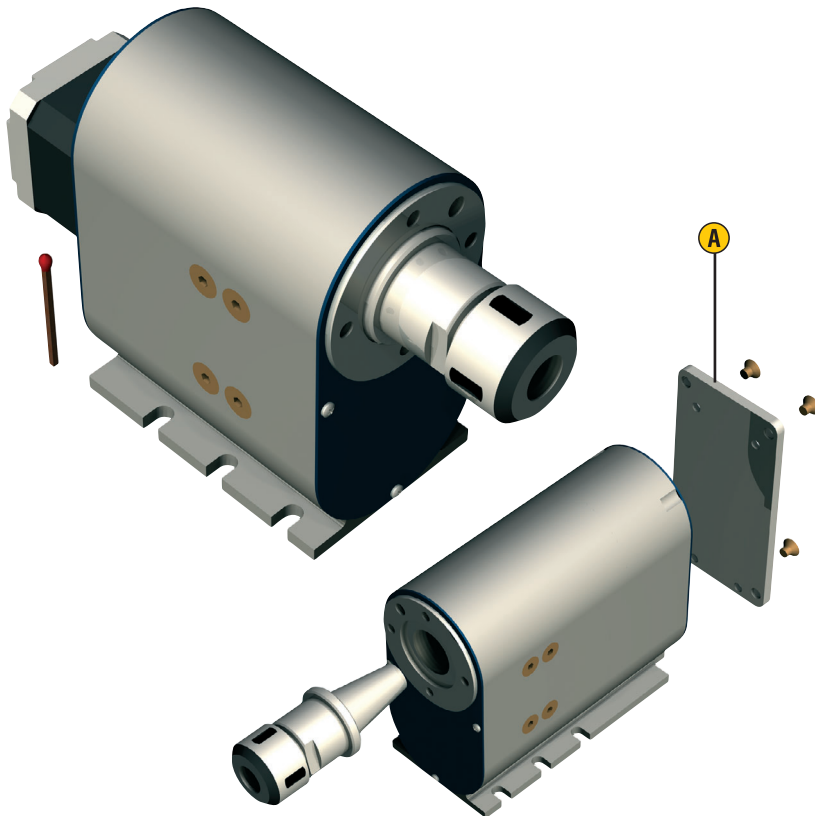


# Midget Rotary Axis

## MD 1



### Features

- play-less timing belt drive with stepping, or DC servo motor
- reduction 1:20
- shaft with through hole  $\varnothing 9$
- reception flange with internal cone SK 20
- weight: according to design from 1.35 kg upwards

### Options:

- "closed" design
- additional mounting plate (vertical mounting possible)
- CNC control via Sub D

- A** **Mounting plate**  
(vertical mounting of the closed design)  
Item no.: 277 026

### Order key

**261010 0XX0**

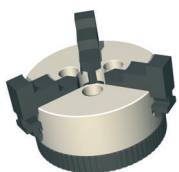
#### Motors

- 0 = stepping motor  
1 = DC servo motor  
(only in closed design)

#### Design

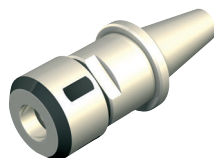
- 0 = „open“ design  
1 = „closed“ design

### Accessory



#### Chuck

3-jaw chuck  $\varnothing 65$   
Item no.: 269060 2065



#### Collets fitting

Collets SK 20  
for tools  $\varnothing 3-10$  mm,  
with mounting ring  
Item no.: 239122 0001

for tools  $\varnothing 3-12.7$  mm,  
with mounting ring  
Item no.: 239122 9001

# Midget Rotary Axis

# MD 1

## Technical data

	Stepping motor MS 045 HT *	DC servo motor MV 030
Reduction ratio	1:20	1:20
Drive revolution [1/min]	0 - 60	0 - 120
Operating moment (0 - 1600 Hz) [Nm]	8	--
Nominal torque [Nm]	--	2
Nominal holding torque (static load) [Nm]	14	3
Min. increment (positioning accuracy) [arcmin]	3,5	2

\* Values at half-step operation

## Scale Drawings

	Length L at step	Length L at DC servo
open design	125,8 mm	-
closed design	129 mm	180 mm
closed, with mounting plate	133 mm	184 mm

