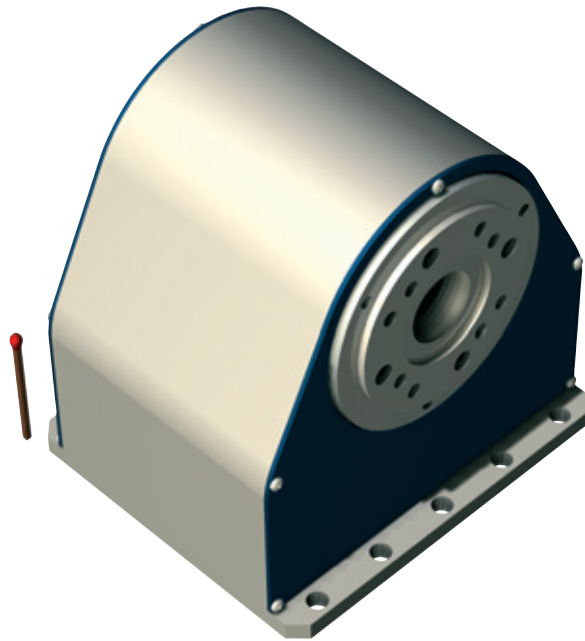


# Rotary Axis

# ZD 30



## Features

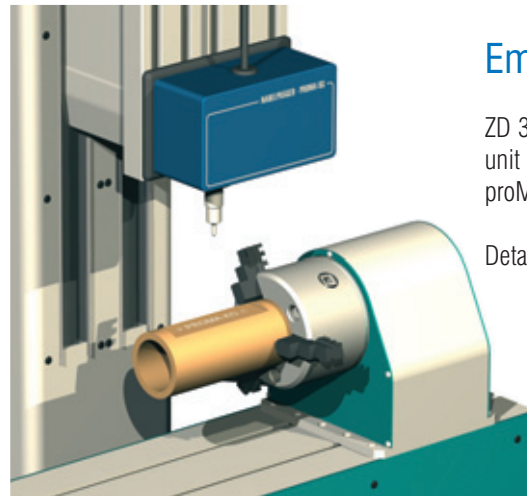
- play-less timing belt drive with stepping motor
- reduction 1:30
- shaft with through hole Ø 15
- reception flange with internal cone SK 20
- weight: 2,9 kg

### Options:

- CNC control via Sub D

## Ordering Data

Rotary axis ZD 30  
Item no.: **261100 0000**

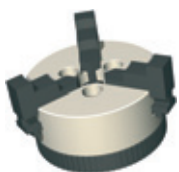


## Embossing

ZD 30 combined with the pin marking unit from the company proMA Technologie GmbH.

Details upon request

## Accessory



### Chuck

3-jaw chuck Ø 65  
Item no.: **269060 2065**



### Chuck

3-jaw chuck Ø 80  
Item no.: **269060 0080**



### Collets Fitting

Collets fitting SK 20 for tools Ø 3-10 mm, with mounting ring  
Item no.: **239122 0001**

for tools Ø 3-12.7 mm, with mounting ring  
Item no.: **239122 9001**



### Tailstock Unit RE-ZD 30

200 mm	Item no.: <b>269 100 1060</b>	L 331
300 mm	Item no.: <b>269 100 1070</b>	L 431
400 mm	Item no.: <b>269 100 1080</b>	L 531
500 mm	Item no.: <b>269 100 1090</b>	L 631

## Rotary Axis

## ZD 30

## Technical Data

		Stepping Motor MS 045 HT*
Reduction ratio		1:30
Drive revolution	[1/min]	0 - 40
Operating moment (0 - 1600 Hz)	[Nm]	12
Nominal holding torque (statische Belastung)	[Nm]	20
Min. increment (positioning accuracy)	[arcmin]	2,5

\* Values at half-step operation

## Scale Drawing

