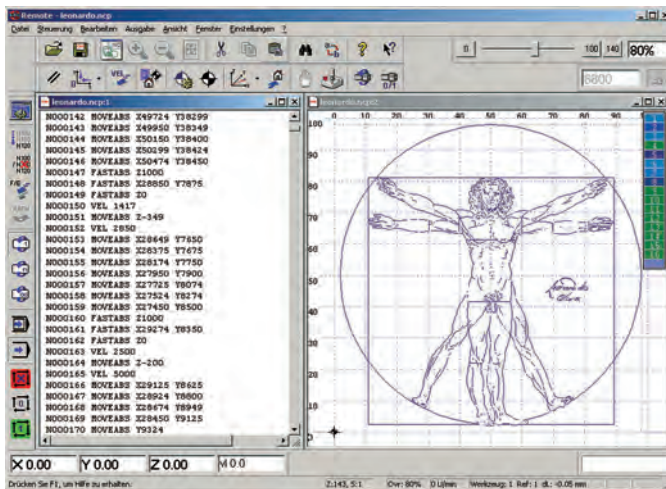


Remote

Control software for Windows



General

Remote is a universal control program for outputting files for machining methods milling, drilling, adhesive bonding, engraving, applying and water jet cutting or laser cutting/welding.

Supported file formats are the isel-specific NCP format (ASCII file with machining data generated by a CAM post-processor, the isel-specific CNC format (ASCII files in an expanded format for universal use in the process automation area, generated by ProNC) and the G-code format to DIN 66025.

Remote is used first and foremost for controlling CNC machines operating different tasks and processes, which is why flexibility is a key feature of the program. A large choice of options allows easy adaptation to current requirements in each case.

Features

- Support for digital joysticks
- "Fast file selection" control panel for serial production
- Milling/multiple output with movements
- Graphic depiction of the processing file with zero point and dimensions

isel-NCP, DIN66025/G-code file formats

- Linear and circular interpolation, helical interpolation, drilling cycles
- Access to digital and analogue inputs and outputs
- When using a CAN controller: "On-the-fly" input/output (without stopping the movement) for metering applications
- Message window, messages in the status line, time delay, input of variable values
- Definition and use of machine positions (tool zero point, park position, home position, etc.)

Additional features for the isel-CNC file format (ProNC output format)

- Repeating loops, counting loops, unconditional and conditional branches
- Arithmetic and trigonometric functions
- Sub-program systems
- Real and symbol chain variables
- Loading and storing process variables
- Access to user-specific expansions, option to call up user software

Ordering information

Part no.: **Z12-334500**

Remote - software for CAN-CNC controllers (Windows)

Features

- runs with Windows operating systems (Windows 2000, XP, Vista)
- compatible with previous software versions
- Processing of DIN66025 (G-code) file formats, NCP or CNC
- immediate processing without conversion, File translation or conversion
- integrated text editor with numerous features for rapid corrections to the present NC program
- Use of up to 6 interpolating axes (Cartesian coordinates system and 3 auxiliary axes)
- Look-ahead track processing with CAN controller
- Managing a milling spindle
- 2 I/O units can be used (max. 64 inputs, 64 outputs)
- Signalling inputs and outputs for process synchronisation
- manual axis movement with joystick, keyboard and mouse
- incremental processing and system monitoring for commissioning
- Configurable interface for user-friendly operation, serial production, handshake with master PLC, etc.
- Control panel for movement control, input/output, spindle and tool change with buttons
- Control panel for max. 6 handling axes independently of the interpolating axes available in various languages (German, English, French, Magyar)